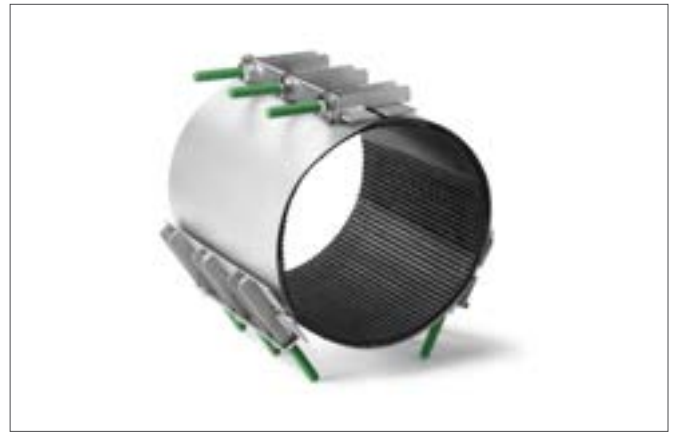


REPAIR CLAMP TYPE RS-3

PIPELINE PRODUCTS FOR WATER, GAS AND INDUSTRIAL APPLICATIONS

Romacon stainless steel repair clamps type RS-3 are used for permanent repairs of broken and damaged pipes

For water, gas and petrochemical fluids



Application

The clamps can be used on following pipe types:

- Ductile Iron (DI)
- Cast Iron (CI)
- Steel (St.)
- Asbestos Cement (AC)
- PE coated steel
- PVC*
- GRP*
- PE*

** If pipe repair clamps are to be used on plastic pipes, please always contact Romacon or a Romacon distributor for more information regarding the application and restrictions on these pipe types.*

Pressure ratings

Pressure ratings for water ** depend on the type of break or damage, pipe OD, medium etc.

- Pipe DN 250 up to and including DN 500: 10 bar
- Pipe DN 500 up to and including DN 600: 6 bar
- Pipe DN 700: 4 bar
- Pipe DN 800: 2 bar

Please consult our price-list for working pressures of larger pipe OD's. Our clamps can be modified to cope with higher working pressures.

*** Please contact Romacon or your distributor for more information regarding pressures on gas pipes.*

Available sizes

RS-3 clamps are available in many different working ranges for pipes of DN 250 up to and including DN 1000. Please consult our price-list for more details on the working ranges. Available lengths: 300, 400, 500 and 600 mm. Other lengths available on request. If you need to repair larger pipes we can offer 4 band or 5 band clamps. Please contact us for more information.

Available rubber gaskets

RS-3 clamps can be supplied with the following types of rubber:

EPDM	- potable water - waste water	max 60 degr. C.
EPDM HT	- potable water - waste water	max 150 degr. C.
NBR	- natural gas - potable water - waste water	max 70 degr. C.
VITON	- several chemicals please contact Romacon	max 200 degr. C.

Our rubber gaskets are certified to European standards, such as ACS (France) and WRAS (UK). Please contact us for a detailed list of current certifications.