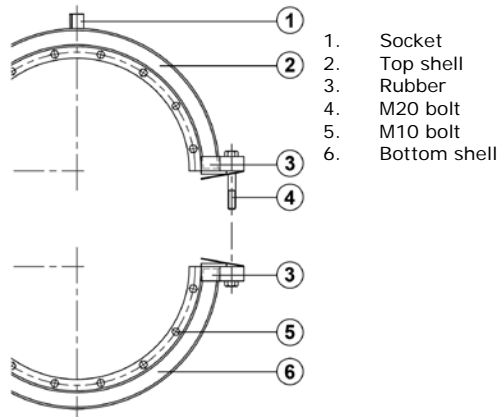


## Installation Instructions Split-barrel



1. Socket
2. Top shell
3. Rubber
4. M20 bolt
5. M10 bolt
6. Bottom shell

**IMPORTANT: Always check that you have a correct and fully functional product with the right dimensions before starting work.**

### Before installation:

1. Check the diameter of the pipe and make sure you are using the right product.
2. Clean the pipe carefully before attaching the split-barrel, removing all soiling and loose parts.
3. Make sure there is no soiling or loose parts left sticking to the rubber when guiding it around the pipe and that they do not get in between the pipe and the rubber when tightening the bolts.
4. Keep the thread of the bolts free of earth.
5. Use a torque wrench. Use the right size of wrench and the right tightening moment (Step 6).
6. Bolts are often not properly tightened if a torque wrench is not used. In such situations, make sure that the bolts are properly tightened.

### Installation:

#### Step 1

Mark the pipe where the ends of the split-barrel will be. After installation use these marks to confirm that the split-barrel has been properly positioned.

#### Step 2

Thoroughly clean the pipe before attaching the split-barrel, removing all soiling and loose parts. Apply lubricant to pipe and rubber (liquid soap). **DO NOT use grease!**

#### Step 3

Place the top shell (with socket) on the pipe. Now swing the bottom shell under the pipe and fit an M20 bolt with nut on each side so that the bottom shell is left hanging on the hinges (Fig. 1).

#### Step 4

Fit the remaining M20 bolts (Fig. 2).

#### Step 5

Tighten the M20 bolts with nuts evenly and in the right order (Fig. 3) in steps of 20Nm. Use a torque wrench with a handle of at least 300 mm in length.

#### Step 6

Tighten the M10 bolts evenly and in the right order in steps of 10Nm. (Fig. 4). Use a torque wrench here too.

Tightening moments:	Wrench size:
M20: 150Nm	30
M10: 50Nm	17

Always pressure test before backfilling the ditch. If leakage occurs, repeat steps 4, 5 & 6 and then pressure test again.

#### Step 7

Wait 20 minutes and then retighten to proper torque. If the split-barrel is underground, backfill and compact the ground around the split-barrel carefully.

Fig. 1

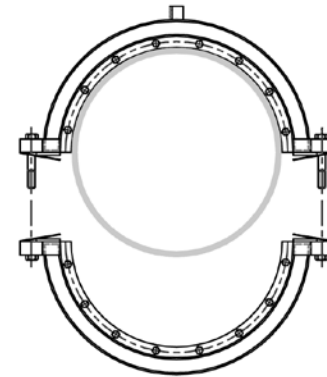


Fig. 2

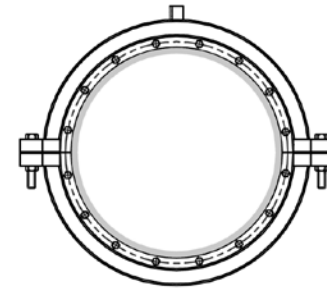


Fig. 3

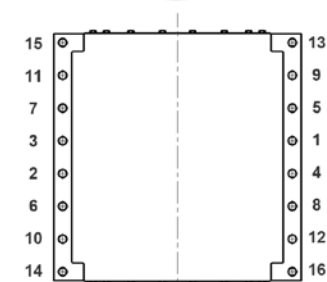
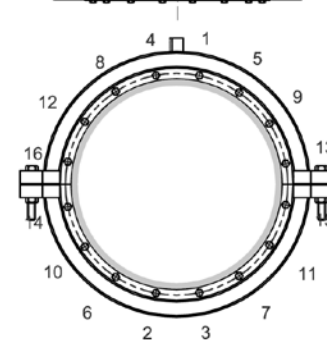


Fig. 4



# ROMACON

All our quotations, all orders place with us and all contracts concluded with us are subject to the METAALUNIE CONDITIONS, filed with the registrar of the District Court of Rotterdam, as stipulated in the latest text lodged with said court. All disputes arising from quotations, agreements and deliveries shall be adjudicated by the competent Dutch court. The conditions of delivery have already been sent to you and are in your possession. They will be sent to you again on request. The law of the Netherlands applies to all our offers and deliveries.